



# Lincs South Federation News

October 2021

Issue 86

Hello,

I'm finishing off the newsletter whilst also double (and triple checking!) to-do lists for the Federation Day which is rapidly approaching. All the Federation team have been involved in putting the event together and we have been overwhelmed by the amazing response. Naturally, we were disappointed to have to hold a ballot to comply with the hall's maximum attendance figures. It's very encouraging to know how keen we are to get back together but keeping safe at the same time.

For those of you that are unable to make it I hope that you can come along to another Federation event in the near future. We have lots of planning for 2022 underway and I'm certain that there will be something of interest.

Best wishes

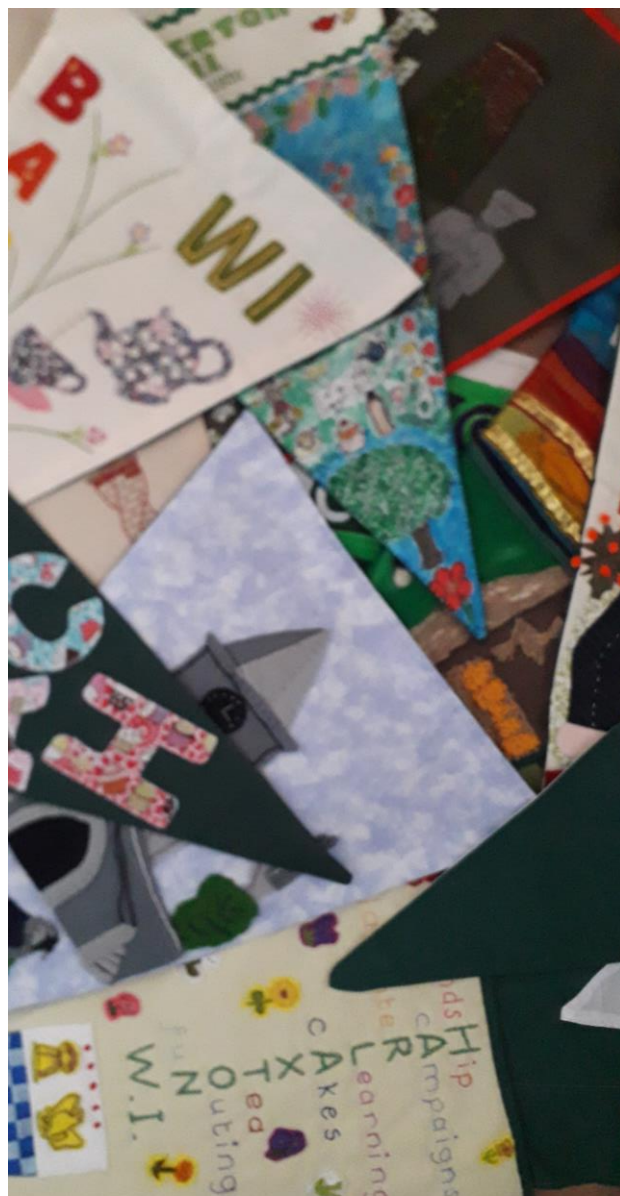
Liz



LSFWI Chairman

[lmcintoshwi@gmail.com](mailto:lmcintoshwi@gmail.com)

07969360344



## PENNANTS!



[facebook.com/lincssouthwi](https://facebook.com/lincssouthwi)



[@lincssouthwi](https://twitter.com/lincssouthwi)



[lincs\\_south\\_wi](https://instagram.com/lincs_south_wi)

**Office Contact Details:** WI Office, Pattinson House, Oak Park, East Road, Sleaford

NG34 7EQ. 01529 302398

[fedoffice@lsfwi.org.uk](mailto:fedoffice@lsfwi.org.uk)

Charity No -506268

## TAKE A CHANCE

### September winners:

- Alma Taylor of Colsterworth WI
- Joan Mitchell of Tollgate WI

### All TAC winners:

To assist with the payment of TAC winnings please contact the office with your bank details or confirmation that you would prefer to be paid by cheque

Email: [info@lsfwi.org.uk](mailto:info@lsfwi.org.uk)

## Newsletter

The feedback to the new look newsletter is always positive. However, we would love to know what you like and what you would like more of. Do you like the news from our WIs? Would you like more craft/recipe ideas? More NFWI news? Please let us know.

Are you on our distribution list for the newsletter?

If not, please get in touch:

Email: [fedoffice@lsfwi.org.uk](mailto:fedoffice@lsfwi.org.uk)

## OFFICE OPENING

**WI Office will be open on Monday,  
Tuesday and Wednesday from:  
8.30 am until 2.30pm**

**Please note the office is closed on  
Bank Holidays**

## Denman at Home

October offers a host of online classes including:

### Richard's Talk on Flora and Fauna : Symbolism, Attributions and Legends in Art Through the Ages – Part 1

Join Richard Box as he explores the symbolic meanings and artistic representations from various cultures since history began.

### Etymology Forays with Brian - Taster Session

Join Brian Jaques for this taster session of his upcoming 4 part series of forays, looking under lexical bushes to see what's there. It includes a brief review of the history of the English language

### Preserves with Lindy - Fig & Vanilla Jam and Stuffed Baked Figs

Lindy Wildsmith has designed this course as a demonstration with Q&A so please sit back, enjoy and take lots of notes so that you can recreate in your own time.

Courses are from 1 hour in length and generally cost from £5

Check out the availability at:

<https://www.denman.org.uk/whats-on/?search=Online%20Course>

And now:

### Denman on Demand

### Denman on Tour

Details at:

<https://www.denman.org.uk>

## THE VIKING WAY SCARF update

As you know we are joining with our friends from Lincolnshire North and Lincolnshire Humber and Leicestershire & Rutland Federation to Knit the Viking Way.

This long-distance path runs for 147 miles from Oakham in Rutland to Barton-upon-Humber in North Lincolnshire. The challenge is to cover this length (virtually) in scarves.

Thank you to everyone who has already sent in their completed scarves or have pledged to take part in the challenge. Just to remind you, there is no definitive scarf, just do your own thing – any wool or length. When you have completed your scarf, or scarves, please log your scarf length on the dedicated email address: **[lincsvikingscarf@gmail.com](mailto:lincsvikingscarf@gmail.com)** .

**Please Include your name and WI**

If you have a suitable outlet for the finished scarves, such as a local homeless charity please retain your scarves. If not please deliver to WI Office.

For further information please contact WI Office on [fedoffice@lsfw.org.uk](mailto:fedoffice@lsfw.org.uk)



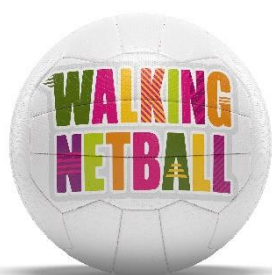
## Diaries 2022

Unfortunately, due to changes regarding the distribution procedures for NFWI diaries, we are unable to place a bulk order.

Orders can only be placed direct with WI Enterprises:

<https://shop.thewi.org.uk/collections/stationery>

Stock of the diary will be available from November. The cost is £6.50 plus P&P



Are you keen to try Walking Netball? Easily find a group near you and get in touch with the WI host today.

<https://mywi.thewi.org.uk/interests/sport-and-wellbeing/walking-netball/find-a-wn-session-near-you>

## *News from our WIs.....*

### **BASTON WI**

Baston WI met in person for the first time in 19 months on a warm, sunny afternoon at the beginning of August outdoors on the playing fields in Baston. We are so fortunate to have this wonderful facility in the village.

Each member brought their own chair and refreshments and President Steph' Balderson kept business to a minimum so that we could get down to the serious business of our mini-Olympics. These involved various garden games – target ball, quoits, bar skittles among others – and after an hour or so Rachel Tooby had totted up the most points with Marie Davenport a close second. After the presentation of prizes it was lovely to move around the group, chat and catch up with each other.

A couple of weeks later a small group travelled up the road to Bourne where we tried our hand at Petanque under the kindly guidance of members of the Bourne Abbots Petanque club. Steph' Balderson and Barbara Cullimore came home with the trophy.

What a sporty bunch we are in Baston WI!



Steph' Balderson, President Baston WI

## BURTON CORNER WI

Just an update to let you know we raised just over £1000 at our recent garden party and we thought that we could split the money and donate some to 3 local causes, to be discussed at our next meeting.

Judy, Burton Corner WI Secretary



## CARLBY & DISTRICT WI



It was a dry but rather windy and chilly afternoon in August when over 20 members of Carlby and District WI, along with visitors from Witham-on-the Hill WI, got together in my garden for a tea party raising £260 for Breast Cancer Now. A wonderful social afternoon supporting a good cause. It was wonderful to see so many happy faces chatting together in person for the first time in so many months. We contributed sandwiches, savouries, cakes, scones and beautiful table flower arrangements along with donating raffle prizes.

Rosie Nelson, President Carlby & District WI

## STAMFORD WI

I (WI Adviser Sharon Antony) visited Stamford WI last week to fill in as a speaker for them. I told them tales from my time as a midwife – I think they enjoyed it! I had a great time and thought a brief report of my evening would be useful!

Before each meeting the members have a Knit and Natter session, and they are currently creating scarves for the length of the Viking Walk initiative the Federation is organising

Sharon Antony, WI Adviser



## RIPPINGALE & DISTRICT WI



Rippingale members have been busy knitting scarves for the homeless.

The 24 scarves have been donated to: The Garden House Charity for the Homeless, Peterborough

Rachel Price, President Rippingale & District WI



## LEASINGHAM WI

Leasingham is celebrating the Big Green Week by decorating the church gateway with hand crafted flowers. Our members have knitted, sewn and crocheted a variety of flowers plus a couple of bees to remind everyone of their

fragility. The aim was to keep the flowers in place until 26th but the church verger and parishioners are so pleased with the display that they have asked us to keep them up until the end of the month, while they celebrate Harvest Festival and school children's services. At least being handmade they won't need watering!

A special mention to Pam Kyte who is camera shy but made a tremendous effort producing flowers.

Maureen Corbett, President Leasingham WI

## LONG BENNINGTON WI



Back by popular request, in July and August members again enjoyed Summer Garden Parties.

This year we dressed for the occasion in frocks and fascinators or hats, inspired by our July speaker, milliner Anne Lawtry of Mabel Lilly Hats.

The parties were a great success, and everyone appreciated being together to celebrate our WI friendship.

After so many months of meeting on Zoom, we are looking forward to returning to our Village Hall on 7th September for a long-awaited reunion and social evening. It will be good to be back!

Anne Swarbrick, Long Bennington WI

## WELLINGORE WI



Wellingore WI members participated in a very successful community festival which was created around a display of flags. The flags featured designs generated by local children. Wellingore WI and other groups provided the sewing skills to produce the finished flags. Wellingore WI members served tea and cakes – some of which were also generously donated by our friends at Navenby WI – throughout the afternoon. The afternoon attracted good crowds with stalls, circus performers and craft demonstrations. It was a huge success, and we were pleased to have had the opportunity to participate.

Our next venture is to return to helping with our village Books and Butties which resumes in October. Helping to raise funds for our village hall by the sale of refreshments.

Helen Berrie, President Wellingore WI

---

## COFFEE MORNING

---

**FRIDAY 26 NOVEMBER 2021**

**10.30AM TO 12 NOON**

**REFRESHMENTS**

**RAFFLE**

**SALES ITEMS**

**JOIN MEMBERS OF THE FEDERATION TEAM**

**IN THE OFFICE**

For details email: [fedoffice@lsfwi.org.uk](mailto:fedoffice@lsfwi.org.uk)

---

Navenby WI



**CHRISTMAS BAZAAR  
&  
CRAFT FAYRE**

**Saturday 20 November 2021**

**11 – 2.30 pm**

**The Venue @ Navenby**

\*\*\*\*\*

**20+ craft stalls**

**Santa Post Box, Fancy Dress Competition for 11 years and under (12.30)**

**TOMBOLA AND RAFFLE**

**Hot/Cold Refreshments**



*All Welcome - Free Entry*



# CLIMATE AMBASSADORS

## GREAT BIG GREEN WEEK

Witham-on-the-Hill WI ladies and helpers spent an (enjoyable?) couple of hours last Sunday carrying out a litter-pick, as our event for the WI & Climate Coalition's **Great Big Green Week**, focussing on our climate crisis and ways to help.

Armed with our smart and safety-first, hi-vis vests, we tackled cleaning up the laybys and verge just outside our village, on the main Stamford to Bourne road.

We were astounded by the total of 26 large bags of rubbish that we collected in that short time and in that small area! Haven taken away the bags of rubbish - plastic bottles, cans, wine and beer bottles (party venue??), sandwich wrappers, chocolate wrappers, household goods such as mops, broken kitchen worktop and other even more unsavoury rubbish - we were still left with 4 plastic garden chairs, a large roll of carpet and about 12 tyres! Really, what does this say about our society?

However, we enjoyed an impromptu picnic on the green afterwards. It is good to know we have made a small difference.

Thanks so much to all our pickers and supporters and the crafters who contributed to a beautiful new bunting, shown below at the Parish Hall, useful for all our "Green" events in future.

### Our new bunting for Green Weeks



Litter pickers near Witham



Some of the 26 bags of rubbish - and other grisly finds!

Do you have plans to highlight COP 26 If you have an article on any environmental project that your WI is, or has been involved with, please forward to: [fedoffice@lsfwi.org.uk](mailto:fedoffice@lsfwi.org.uk)

Would you like to join our team of CLIMATE AMBASSADORS? For more info email: [fedoffice@lsfwi.org.uk](mailto:fedoffice@lsfwi.org.uk)

## Take action on Afghanistan – a message from NFWI

We are extremely concerned about the situation in Afghanistan and particularly the risks to the safety of women and girls. If you would like to take action on this issue, we have put together a webpage with resources such as a template MP letter, a link to a petition and ways you can support Afghan refugees arriving in the UK with donations of clothing and other items.

<https://www.thewi.org.uk/campaigns/news-and-events/take-action-on-afghanistan>

The Government have a service whereby you can offer help to refugees in your area, this includes donations of goods such as clothes and toys: <https://www.gov.uk/help-refugees>  
**Islamic Relief** has various drop-off points for clothing and other items around the UK: <https://www.islamic-relief.org.uk/get-involved/clothes-recycling/find-your-nearest-clothing-bank/>

**Care4Calais** is a Manchester-based charity but does have collection points all over the UK, and they have been collecting donations for Afghan refugees. Find your nearest donation point by visiting <https://care4calais.org/get-involved/collect-donate/>

If you know of local charities collecting donations of goods for refugees, please do let us know at [pr@nfwl.org.uk](mailto:pr@nfwl.org.uk) so we can add it to this list.

Please note that as per the WI charitable constitution, WIs can only fundraise for charities that benefit the local community and therefore would not be able to raise funds for national charities supporting Afghan refugees. All activity must be in line with the NFWI's fundraising guidelines. To find more information on our fundraising guidelines for members, [visit My WI](#).



We have been asked by Age UK to share this with members: **Visitor Host Project**

This exciting project is a brand-new initiative across the whole of Lincolnshire, recruiting and training Volunteer Visitor Hosts to support Care Homes with providing covid-safe visits between family and friends and their loved ones.

As Covid-19 restrictions ease, care home residents are now able to have their loved ones visit them once again, which is vital to their mental and physical wellbeing. However, this brings further challenges to care homes as they open their doors to visitors whilst providing a safe environment for all.

This is a great way that you can make such a difference to a **local** care home and your community.

For further information please feel free to give us a call on 03455564144, email to; [Volunteering@ageuklsl.org.uk](mailto:Volunteering@ageuklsl.org.uk) or complete the enquiry form on the website. We'd love to hear from you.

**Lorraine Tompsett / Volunteer Visitor Host Project Coordinator**

# FOR SALE

Following the reorganisation of the offices we have for sale the following:

Desk: 800mm x 1800mm x 720mm



Safe: 280mm x 180mm x 200mm  
Burg Wachter PointSafe:

<https://www.safe.co.uk/products/burg-wachter-point-safe-p1s.html>

Brand new in its box! Retail price £66



We also have available the table that was previously in the committee room. Unfortunately, this doesn't fit in our new room.

We are happy to accept offers for all items.

For more information: [fedoffice@lsfwi.org.uk](mailto:fedoffice@lsfwi.org.uk)

## LOCAL INTEREST?

New local Lincolnshire book .....

### BOSTON'S RAILWAY HERITAGE

Memories of the Railway in this Lincolnshire Town

By Stephen Priestley and Neil Watson

In this book, the authors gather together rare, often previously unpublished, photographs of the various areas of the railway as it crossed the town, along with many memories and historic facts about Boston's railway heritage, and review the dramatic effects of the famous 'Beeching' cuts of the 1970s.

Over 200 photographs and 110 pages

Order direct from authors - not yet available in shops.

£12.50 (+ £3 post)

E mail: [neilwatsonphotography@gmail.com](mailto:neilwatsonphotography@gmail.com) for order details.

Order Form

### BOSTON'S RAILWAY HERITAGE

Please supply \_\_\_\_ copies of the book @ £12.50 each.

Please include £3 per order for UK postage. Overseas postage contact us for a quotation.

I enclose a cheque for £ .....

Name .....

Address .....

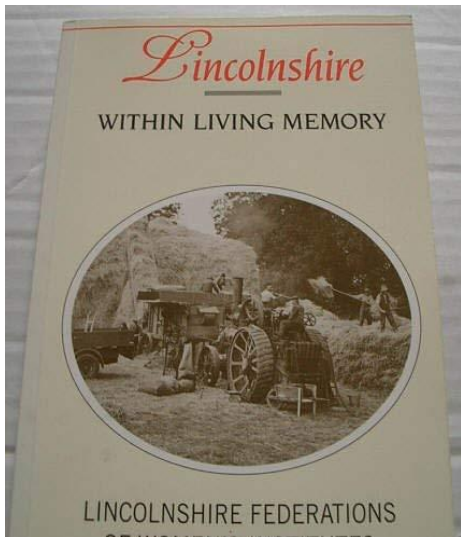
Tel: ..... E mail .....

Cheques to be made payable to 'Neil Watson'.

Send your completed order to:-

Neil Watson  
16 Forest Dale  
Boston, Lincs. PE21 9HD

For more information, or to make arrangements to collect (and save postage), e mail [neilwatsonphotography@gmail.com](mailto:neilwatsonphotography@gmail.com) or phone 01205 360385.



## LINCOLNSHIRE WITHIN LIVING MEMORY

In 1995, the Lincolnshire and Humberside Federations of Women's Institutes published a book called "Lincolnshire Within Living Memory". The frontispiece states that it was "Compiled by the Lincolnshire North, Lincolnshire South and Humberside Federations of Women's Institutes from notes sent by Institutes in these Counties."

There are many, many fascinating memories and facts, including these about Sleaford and Pinchbeck -

"Sleaford market place on May Monday was once full of would-be employees come in from the surrounding villages looking for work. Mostly agricultural workers, farmers and others were there to select whom they wanted. When the event took place in the late 1920s girls at the High School were given a day's holiday because the Head considered it would be dangerous for them to walk through the town."

"At Sleaford County Senior School we were asked to make a special meat dish for Parents Day. Mother bought me a sheep's head for sixpence and the butcher took the eyes out and chopped off the snout. Mother showed me how to trim it and we put it in salted water overnight. The next day it was washed and simmered for about two hours, when the meat was taken off the bone and put through the mincing machine. The following day I took the meat and flour and lard and a round pie dish to school and on Parents Day I could have sold the resulting pie many times over."

"The retired headmaster of Pinchbeck school remembers that 50 years ago it was an 'all-age' school of 200 children between the ages of 5 and 14, housed in five classrooms. He was given the job of teaching 48 pupils in the eight to ten age range, housed in a room 22 foot by 20 foot. There were two small windows and the artificial lighting was provided by two 60 watt bulbs. There was a classroom either side of his, the partitions not being exactly soundproof and he often had to compete with a class rendering *There is a lady sweet and kind* on one side and a class chanting the four times table on the other side."

Anne Kiely, Barrowby WI

As the Federation tries to balance the books after losing out on income due to the pandemic, we are asking for your help.

If you use Amazon, by going to their **smile.amazon.co.uk** platform and nominating us as your charity, they will make a small donation of 0.5% of the purchase price to the Federation for every purchase you make.

Once you have nominated your charity, the donation happens automatically for any purchases made. There are no additional charges and item prices are the same as when entering the Amazon site via normal channels. There is no need to change your Amazon account - but you must access it via Smile.

If we all nominate the Federation as our charity all those tiny amounts will add up to something more substantial so please go to <https://smile.amazon.co.uk/ch/506268-0> and type 'Lincolnshire South' in the search box then select Lincolnshire South Federation of Women's Institutes.

After that all you have to do is remember to use the smile site – **smile.amazon.co.uk**. Nothing else changes – you just buy as normal but know that you are helping the Federation just a little bit.



---

## *Activities Committee* – A name you might not know

The Trustees have decided to try a different way to organise events that were previously covered by the Art/Craft and Cookery Committee and the Leisure and Sport Committee.

The new Activities Committee encompasses everything that would have taken place under the old committees, and we hope that you will give it your full support.

The new Committee needs your help, just like the old ones did and I ask you to consider if you can help us to help your fellow members make the most of what we can offer.

Do not think you do not have any special skills or are only interested in leisure or craft or cookery etc. so it would not be worth your while in helping us.

We need ideas for venues and events, practical help in running events and people to be there to bounce suggestions around.

Being a committee member is not onerous we hope to meet once a month, sometimes in the new training room at Sleaford and sometimes by zoom and committees should not last more than an hour and a half.

Please do think about this and if you are at all interested please email the office on [fedoffice@lsfwi.org.uk](mailto:fedoffice@lsfwi.org.uk) with your name, WI and telephone contact details so I can get in touch to discuss how you can be a part of this new venture.

I look forward to hearing from you and getting this new show on the road.

Margaret Hawkins, Chair Activities Committee

## *Members Advisory Committee*

**October is MCS month.**

An accurate MCS is essential for the smooth running of your WI.

If you require help with updating your MCS please

contact WI Office: [fedoffice@lsfwi.org.uk](mailto:fedoffice@lsfwi.org.uk)

### **Programmes**

With most WIs now meeting we would love to take a look at the programmes you have planned for 2022.

Please email a copy to WI Office: [fedoffice@lsfwi.org.uk](mailto:fedoffice@lsfwi.org.uk)

or feel free to send by post/deliver

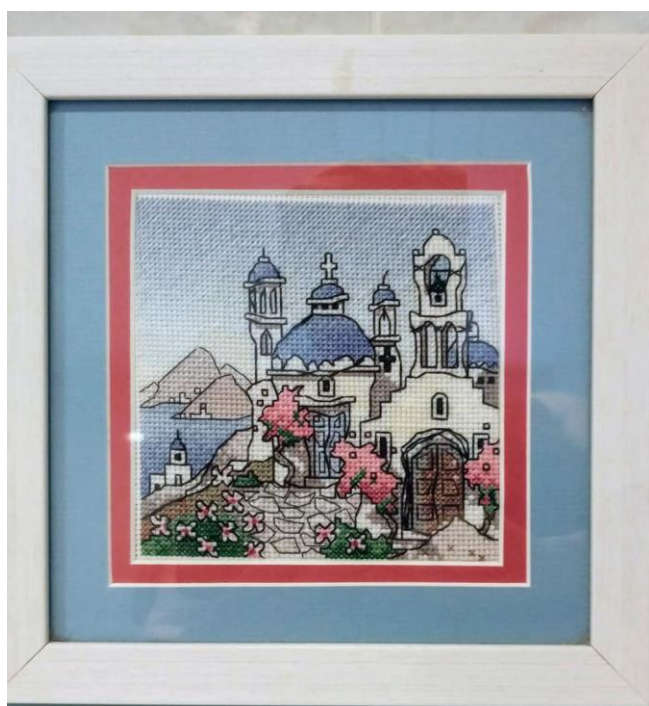
---

## **LOCKDOWN HOBBIES**

**Did you take up a new hobby during the lockdowns?**

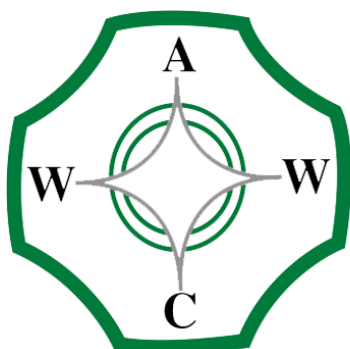
**Have you details of a project that you would share with us?**

**Please send your pictures/details of anything you have created to: [fedoffice@lsfwi.org.uk](mailto:fedoffice@lsfwi.org.uk)**



**These stunning cross stitch projects were completed by Tracey, Federation Secretary**





**Associated Country  
Women of the World**

**26th October**

**7pm**

**Calling all WI quizzers countrywide!**



**Free Entry**

ACWW's CEO – Tish Collins will be hosting an ACWW based quiz on Tuesday 26<sup>th</sup> October from 7pm. This will be done online and the link emailed out to you shortly before the event.

Why not find out how much you know about the organisation and have fun at the same time?

ACWW's fund raising has been hit in the last eighteen months and this is one way to boost its coffers.

The event is being run through Eventbrite. To register please google <https://tinyurl.com/46bd6dy9> which will take you straight to the web page. The event closes on Tuesday 19th October.

Please make any donations by cheque made payable to ACWW or electronic payments via BACS to their bank account Nat West, sort code 56-00-33, account no 01244108.

No prizes at the end of the evening just a chance to meet up with fellow WI members the length and breadth of the UK.



**See you there.....**

