



Lincs South Federation News

theWI
INSPIRING WOMEN

Hello,

Next week we will be joining with Lincs North and Lincs Humber Federations to choose the photos that will be included in the 2023 calendar.

The calendar is entitled: Lincolnshire – a friend to the environment.

I am looking forward to showing how Lincolnshire is taking steps towards protecting our environment for the future. We can already see many of the changes in the way we generate low carbon and renewable energy. The wind turbines and solar farms, plus the Sleaford Renewable Energy plant are all indicators that we are making moves in the right direction.

To the right are a few of the photos that we have received.

Best wishes

Liz



Liz McIntosh
LSFWI Chair

lmcintoshwi@gmail.com

07969360344



FIND US ON THE NFWI WEBSITE: <https://lincolnshire-south.thewi.org.uk/>



facebook.com/lincssouthwi



[@lincssouthwi](https://twitter.com/lincssouthwi)



[lincs_south_wi](https://www.instagram.com/lincs_south_wi)

Office Contact Details: WI Office, Pattinson House, Oak Park, East Road, Sleaford

NG34 7EQ. 01529 302398

fedoffice@lsfwl.org.uk

Charity No –506268

TAKE A CHANCE

January winners:

- Yvonne Sharland - Langtoft WI
- Margaret Wild - Ripplingale & District WI

TAC winners:

To assist with the payment of TAC prizes please contact the office with your bank details or confirmation that you would prefer to be paid by cheque

Email: info@lsfwi.org.uk

Why not join the TAC club for 2022/23??

Winners drawn 11 times a year (monthly except August) with an extra draw at the Federation Annual Meeting in March.

Half of the monies raised will be used for prizes, the other half will be used to support the Federation.

Only £5.00 per application

Each applicant will be allocated one number for each £5 payment. Application is with your secretary now

OFFICE OPENING

WI Office will be open on Monday, Tuesday and Wednesday from: 8.30am until 2.30pm

**Please note the office is closed on Bank Holidays
If making a special journey, please contact first.**

Denman

March offers a host of online courses including:

Pat's Patchwork

This new set of 5 courses is a natural progression for anyone who joined 'Pat's Patchwork Block Series For Beginners' in 2021 or is suitable for anyone with prior experience of block making. Although this has been devised as a 5-part course, each session can stand on its own

Baking with Danielle – Hot Cross Buns

Join Danielle as she demonstrates how to make Hot Cross Buns. This recipe creates a tasty bun that has just the right level of sweetness and spice.

Watch Denman on Demand

FREE Photography photo editing with Janine

In this FREE introductory Taster session, Janine will give you an overview of photography editing using Adobe Photoshop Elements editing software. This will demonstrate how your photographs can be prepared and transformed. Denman on Demand

Sweet treats with Kelly – Salted Caramels

Join Kelly as she demonstrates how to make Salted Caramels from her own kitchen, filled with helpful hints and tips along the way. Pause, rewind and fast forward at your convenience if you want to cook alongside her. Denman on Demand

Courses are from 1 hour in length and generally cost from £5

Check out the availability at:

<https://www.denman.org.uk/>



Federation Annual Meeting

10.00am – 12 noon

Saturday 12 March

Come and meet the trustees
Celebrate WI special birthdays
Listen to a talk from our
guest speaker – Lindsey Barrell
“Burlesque, Me and the WI!”

Invitation for this Zoom event is with your WI secretary.

Or contact: fedoffice@lsfwi.org.uk

We would ask each WI to arrange for a delegate to
Attend the Annual meeting

Did you know?

February marked 125 years of the WI movement!

On 19 February 1897, the WI was founded in Ontario, Canada. It was 18 years before the movement came to Britain in 1915. This photo shows the original members of the first ever WI in Stoney Creek.



COFFEE MORNING

Come along to WI Office on Tuesday 8 March from 10.30 to 12 noon to mark International Women's Day 2022.

Catch up with members and the Federation team.

Refreshments

Raffle

IWD 2022 campaign theme: #BreakTheBias

Imagine a gender equal world.

A world free of bias, stereotypes, and discrimination.

A world that is diverse, equitable, and inclusive.

A world where difference is valued and celebrated.

Together we can forge women's equality.

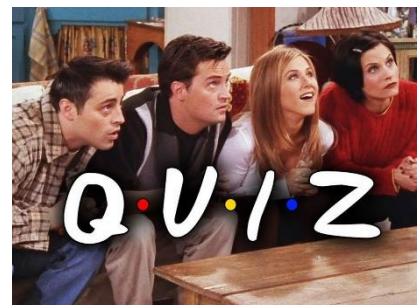
Collectively we can all **#BreakTheBias**

APRIL QUIZ

Ropsley Village Hall

Braceby Road, Ropsley, NG33 4BN

Thursday 28 April 2022 at 2pm



Members £7.50 Non-Members £9.00 (if space allows)

To include coffee/tea and traditional afternoon tea

Join as a team of four and compete for the honour of your WI

or

If your WI cannot make up a team, we will attempt to put individuals into mixed teams

Full details and an application form are with your WI secretary now

ACTIVITIES

First Steps in Designing Your Own Garden

- On **Tuesday 15 March from 9am – 3.30pm** there will a workshop at WI Office. Simple and practical ideas for your garden. The workshop will look at design principles, advice on planting amongst other gardening topics. The workshop will be led by Dorothy Wood, an experienced and qualified tutor. The ticket price of £30 includes tea /coffee throughout the day. You will need to bring your own lunch.

Creative Embroidery



On **Tuesday 10 May 9am – 3.30pm** WI Office

Do you want to get more creative with your embroidery? If the answer is yes, then this is the workshop for you. Using fabrics, fabric paint and threads, let your imagination go and create a beautiful personal design to take away with you. Another workshop led by Dorothy Wood. For more information, please contact the WI office.

Full details of the above events are available on the flyers which are with WI secretaries.

Future Events

The Activities Committee are planning more workshops and events for the year. Those that are in planning include:

Behind the scenes at Toilethorpe Theatre - We have been invited to tour behind the scenes at Toilethorpe Hall, home of Stamford Shakespeare Company. This is now known as one of the finest Open Air theatres in Europe. Behind the Scenes tours start from September which takes groups out behind and under the stage, through all the various rooms housing the incredible range of costumes, sewing rooms etc. We are planning to attend on the 14 September – so save the date!

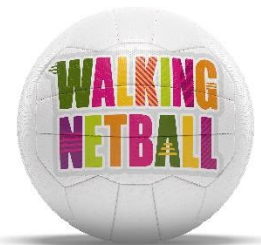
We hope to be able to publish more workshops and events shortly, so please check the monthly mailings

Further details will follow.

Walking Netball

We have a couple of WIs that are taking part in Walking Netball. Would you like to give it a go but your WI doesn't have enough members to field two teams? We are happy to help and put members together to create a team, and who knows, maybe we could have inter WI games.

If you are interested please email: fedoffice@lsfwi.org.uk



MEMBERS ADVISORY COMMITTEE



Hello I'm Marilyn and I am now the chair of the Members Advisory Committee (MAC). I have been a member of Long Bennington WI since 1985, and a WI Adviser since 2018. I once worked for the National Trust, but I am now retired and sew, garden, walk, do yoga/Pilates and try and keep up with my 11 grandchildren! I also have an interest in gliding as I am mother of two international glider pilots and am currently trying to increase women's participation in the sport.

Along with the other WI Advisers, I am putting together a programme of workshops and events to make the running of WIs as smooth as possible! We will of course be able to hold face to face workshops and events and look forward to meeting as many members as possible. If you have specific workshops that you would like to see us run, please let me know.

We will be arranging our usual Speakers Corner event and if you know of any speakers who are not currently featured in the Year Book, and would be popular with WI members, please point them in our direction: fedoffice@lsfwi.org.uk

Marilyn Hood - MAC chair

TREASURERS CORNER

Hello to all WI Treasurers – The membership subscription for 2022 is £44.00. This means it remains the same as the 2021 subscription fee. I have included in the monthly mailing to secretaries the 2022 subscription letter from NFWI for information.

Please keep in mind that the subscription year now runs from April 1 – March 31. However, our financial year for the submission of financial statements and reports remains unaltered at January to December.

Christine Jordan, Federation Treasurer

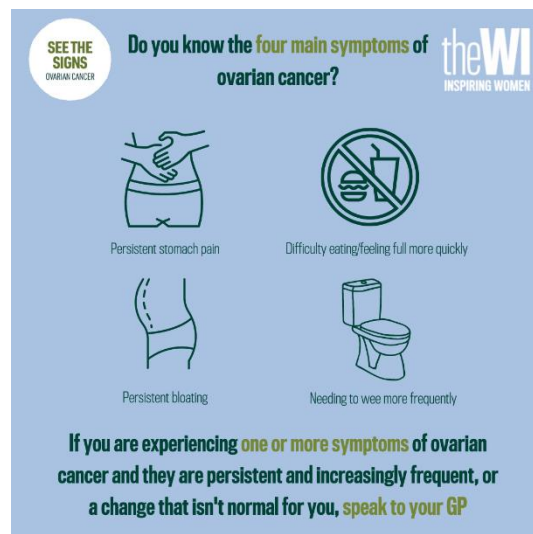
Lincolnshire Coop Community Champions

Funding applications are open for summer 2022 for groups across South Lincolnshire. Community Champions is for local community groups and charities wishing to receive support from Lincolnshire Co-op. Lincs Coop welcome applications from all groups who make life better in their community. Money for Community Champions is raised by members (where a donation is made every time they use their dividend card), carrier bag proceeds, collection boxes and colleague fundraising. Typically, a successful application should receive between £500 - £1,000. They have previously supported some local WIs. If a WI has been successful over 2 years ago they are welcome to reapply. WIs can apply via the website www.lincolnshire.coop/ccapply

PUBLIC AFFAIRS & EDUCATION

March is Ovarian Cancer Awareness Month

March is Ovarian Cancer Awareness Month which the WI will be using as an opportunity to spread the word about our **See The Signs** campaign so all women are aware of the subtle signs and symptoms of ovarian cancer, which can often be mistaken for other conditions. To find out more about the campaign, access resources and the action pack, visit [MyWI/campaigns](https://www.mywi.org/campaigns)



NATIONAL HOLOCAUST CENTRE - THURSDAY 21 APRIL 2022

After the introductory talk, explore the Museum and follow the journey of a 10 year old Jewish boy from Nazi Germany back to safety on the Kinder Train to England. After lunch (included in the cost) listen to a speaker sharing their story of the Holocaust.

*****Closing date 2 March*****

Full details are with your Secretary

Save the Date

24 May 2022

Ladies Luncheon

Speaker: Baroness Sarah Hogg

Venue: Belton Park Golf Club

Resolution Voting

Unfortunately the number of votes cast by WI members was very low this year – less than 25%

The votes were cast in following order (most popular at the top....)

1. Tackling Digital Exclusion
2. Women and Girls with ASD and ADHD: Under-Identified, Under-Diagnosed and Under-Supported
3. Appropriate Sentencing of Non-Violent Women Offenders
4. Equality in Law for the Menopause
5. Fit for Purpose – Fit for Girls

News from our WIs.....

Manthorpe WI

Our first meeting in 2021 found us on the banks of the Witham in Wyndham Park, Grantham on a blisteringly hot day. We were tempted to have a paddle but business first.

Here is our delegate Pam reporting on the National AGM on Zoom with President Sylvia looking on. Events, including an outdoor coffee morning and a fish and chips supper kept us in touch before being allowed to meet in our new premises – the recently completed Community Hall of Manthorpe Church.



Pauline Imber, Manthorpe WI

Foston WI

We've just completed a year of celebrations for our WI's one hundredth anniversary. Even with the COVID stipulations, we've managed to keep in touch with all our members in various ways, via zoom, Afternoon Teas in our gardens, Crafting and of course our wonderful 100th year Garden Party. Where did that year go?

We've now just had our 101st Birthday, on 8th February. The members spoilt our committee by kindly organising a lovely meal, with a wonderful chocolate cake! Another great evening spent in good company.

On the following day some members visited The Bowl, in Grantham, where they were shown how to bowl a straight line. I understand they all had a good effort at this and may have another go!

At our next meeting in March, it will be our AGM, when our next committee is chosen. This can be daunting, but we have been extremely lucky over the years, with our ladies working as a happy team, especially during the pandemic over these past couple of years.



Maggi Challis Foston WI

CLIMATE AMBASSADORS

Wellingore WI have taken Show the Love campaign to heart. They have created a stunning display on the side of the A607 in their very own WI garden.

Climate Ambassador, Jan Banks was also featured on BBC Radio Lincolnshire. Jan was interviewed by presenter, Melvyn Prior. Find the interview on BBC Sounds.



Please send in photos of your Show the Love 2022 campaign to: fedoffice @lsfwi.org.uk

Would you like to join our team of CLIMATE AMBASSADORS?
For more info email: fedoffice@lsfwi.org.uk

Sleep Out Suffolk

WI members of Suffolk East have arranged a camping weekend at Hallowtrees Campsite, near Ipswich, Suffolk

Friday 17th June - Monday 20th June 2022

A lovely weekend camping in a lovely part of the world!

For more information and to get on the mailing list please email sleepoutsuffolk@gmail.com

(This is a SEFWI member led camping trip not a Federation Event)

Kind regards,

Carole Donovan

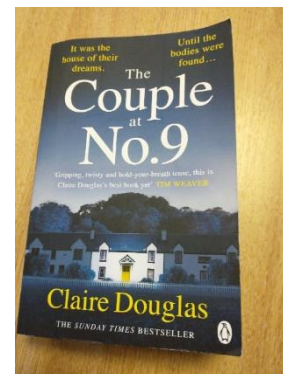
Marsh Maidens WI

Suffolk East Federation

Book Review

The Couple at No.9 – by Claire Douglas

This is the first book I have read by this author, not sure why I picked this up, but it is good sometimes to read something completely different, and often a way of finding a new author, hopefully with a long back list if you enjoy the writing!



Saffron Cutler inherits a beautiful Cotswold Cottage called Skelton Place in the village of Beggars Nook, and along with her husband, they start to renovate the delightful cottage in readiness for the birth of their first baby.

During the excavation of the garden builders unearth two bodies are – a man and a woman. This shelves all the renovation plans as they come to an abrupt halt and a police investigation begins, with forensics believing the bodies had been buried for around 30 years.

The cottage was given to Saffron by her grandmother, who we learn has moved into a care home after being diagnosed with dementia. Saffron adores her grandmother and visits her often; sadly due to her condition, she is in and out of reality and her recollections are not taken seriously – but are some correct?

Saffron contacts her mother Lorna, who lives in Spain and she promptly arrives to try and help her daughter, who unbeknown to her is expecting her first baby. Between them they try to uncover what happened years ago.

Neither Lorna nor Saffron knew anything about Skelton Place prior to the grandmother moving into the care home – it was never spoken about previously.

What began so well with Saffron pruning roses in her new garden, quickly turned into a nightmare scenario with multi layered secrets coming out along the way – some I guessed and some I didn't!

Tracey Copeland, Federation Secretary

CAN YOU HELP??

The Federation Trustees have recently completed an exercise where we have identified all the tasks that the Federation carries out and compared them to the skills that the Trustees have. This work identified some areas where our skill sets are not as strong as we would like. As a contingency, we are looking for members with expertise in those areas to be a back-up and provide advice should a problem arise in the future. There is no ongoing requirement for your time.

The areas we would like support for are:

1. Legal
2. Insurance
3. Investing assets and excess cash
4. Employment law and practice
5. Quickbooks
6. Website management & Social Media

If you are working or have recently worked in any of these areas and would be happy to provide advice if needed, please let the office know on fedoffice@lsfwi.org.uk which area you can help with.

Lady Denman Cup 2022

The Power of Community

Celebrating the Queen's Jubilee, supported by The Big Jubilee Lunch

Using no more than 500 words, WI members are invited to submit a piece of writing, either comical, serious, fact or fiction, which **reflects the powerful impact when a community comes together.**

NEW for 2022

Please note changes to entry requirements:

- Each entry must include a total word count; entries with over 500 words will not be accepted. It is the responsibility of the individual member to ensure that their entries submitted have the correct word count.
- Members can submit as many entries as they wish.
- Entry fee is £5 per entry. Critiques are optional and must be selected and paid for as an additional fee. Cost for this option is £10 (total - entry fee and critique) per entry.
- Requests for late entries to receive a critique by the judges, outside of the competition, will not be granted.
- Deadline for entries is Friday 29 July 2022.
- Entrants will be informed of results by mid-October 2022.

Huxley Cup Competition 2022

The Huxley Cup is the annual design competition and allows members to enhance, develop or share their creative skills and knowledge in gardening, flowers, nature and wildlife. Over the course of the year, members are encouraged to work together as a WI to create a piece of work that reflects a specific theme. Each year the competition theme and style change, but the final result will always be either floral art or garden-based.

Inspiring women countrywide to create a cleaner and greener place to live

This year, the Huxley Cup Competition, supported by the RSPB (Royal Society for the Protection of Birds), invites WIs to design a small community space for wellbeing and wildlife. The wildlife aspect of the entry should focus specifically on the theme of:

Our Fabulous Flying Friends

Think about birds, bees, butterflies, moths, and bats!

The planned space must be accessible and enjoyed by the community. It can be linked to a health care setting (e.g., GP surgery, hospice), or community garden (e.g., community hall), or transforming a grass verge or area in the community which has frequent pedestrians passing by (e.g., Village green, car park area, local park flower bed or cycle path). Designs should be bold and inspiring; the judges will be looking for your idea to be colourful, engaging, and inclusive. Think about growing your own plants, plant sharing, upcycling, reusing, and recycling.

Full details and the application forms for both competitions can be found on MyWI> Make, Create and Do> Shows and Competitions

The Queen's Platinum Jubilee Celebrations

2 – 5 June 2022

To celebrate this unprecedented anniversary, events and initiatives will take place throughout the year, culminating in a four-day UK bank holiday weekend from Thursday 2nd to Sunday 5th June. The bank holiday will provide an opportunity for communities and people throughout the United Kingdom to come together to celebrate the historic milestone.



The Big Jubilee Lunch Sunday 5 June 2022

Every year since the idea began in 2009, The Big Lunch has encouraged communities to celebrate their connections and get to know each other a little bit better, coming together in a spirit of fun and friendship. In 2022 The Big Lunch will bring the Jubilee celebrations into the heart of every community. People are invited to share friendship, food and fun with neighbours as part of the Platinum Jubilee celebrations. A Big Jubilee Lunch can be big or small - street party or picnic, tea and cake or a garden barbeque.



eden project



We are delighted to confirm that the NFWI will be supporting The Big Jubilee Lunch and encouraging WIs around the country to celebrate the Jubilee with fellow members, friends, family and the local community on Sunday 5th June 2022.

Join Tracey Robbins, Head of UK Delivery, Big Jubilee Lunch, and Vicky Constantine-Foster, NFWI Membership Manager on **Wednesday 2 March 2022 at 12.30pm** to find out more about the event and how your WI can get involved. All WI members are welcome to join, but don't worry if you are not available, this session will be recorded and available to watch on My WI at a later date.

- Please ensure you register in advance for this meeting:

<https://us02web.zoom.us/meeting/register/tZwrd-ChqjsvEtwG1qkw7pisDY5bvl17H7eU>

After registering, you will receive a confirmation email containing information about joining the meeting.

Have you organised a Big Lunch? If so, we want to hear from you! Ahead of the Big Jubilee Lunch this summer, we're looking to hear from WI members who have been involved in organising a Big Lunch in the past, so we can celebrate these stories and help make this year's event extra special.

If you have experience of organising and running a Big Lunch event, please get in touch at pr@nfwl.org.uk.

Thankbox Card

We wanted to mark the Platinum Jubilee by giving all WIs an opportunity to pass their celebratory messages and kind words to Buckingham Palace. To do this and be able to reach all WIs, we have decided to take the digital route.

To upload your messages of congratulations, which will be shared with the Palace prior to the Jubilee celebrations please follow this link...

<https://www.thankbox.com/app/thankbox/twuhnhLb>

Please be aware that during the initial upload stage, you may not be able to see all the contributions made by other WIs, so do not worry if you try to find a message from another WI and discover it's not there. The system will process all messages when the card is closed and sent.

Deadline for submitting a message is **Sunday 1 May 2022 at 5pm**, after which the card will be closed, and no further messages can be accepted

Where's Winnie?

To honour The Queen's longstanding relationship with the WI – she joined Sandringham WI, Norfolk Federation, in 1943 and remains its President – we're asking members to take part in an exciting knitting project, to share and celebrate the Queen's Jubilee and pay the WI love forward and cheer up someone's day. Look out for the March issue of WI Life to find out more and register to attend a special knit-along session on **Saturday 23 April 2022 at 10am**.



Register in advance for this meeting:

<https://us02web.zoom.us/meeting/register/tZUkcOuvqjgqH9QJ3WUvaR5-r4GPw5n-ITHI>



What are your plans to celebrate the Platinum Jubilee??

Please send all your plans to WI Office so that we can share them with all our members.

Email: fedoffice@lsfwi.org.uk

ST MARY'S CHURCH, SUTTERTON - STATION ROAD PE20 2JH

FLOWER FESTIVAL

Scarecrows visit London

Sat 23rd April to Mon 2nd May 2022

Open 10:30am til 5.00pm daily

**Refreshments Lunches Plants Bric a Brac Flowers Cakes
Coaches welcome Wheelchair Accessible Parking
Indoor toilet and Toilet for disabled**

DO COME AND SEE OUR SCARECROWS IN A WORLD OF FLOWERS

Contact Janice Despicht on 01205 460590 Ex2

Email: janicedespicht@btconnect.com

www.suttertonparishchurch.co.uk

The Dream Belles

ABBA TRIBUTE SHOW

Wed 13th April at 7.30pm

in Sutterton Community Centre

Tickets £10

(includes a light supper and a glass of wine)

There will also be a wine bar

Please contact Janice Despicht

On 01205 460590 Ex 2

Or email: janicedespicht@btconnect.com

Proceeds to Sutterton WI

Forthcoming Diary Dates - Listed below are forthcoming events. Each event has a stated closing date, by which all applications and payments need to be at the WI Office.



Please pay by online banking if possible, quoting the appropriate reference. Cheques are not banked until the closing date is reached and/or places secured.

FULL INFORMATION IS AVAILABLE FROM YOUR WI SECRETARY

Date	Event	Ticket	Ref	Closing
Saturday 12 March	LSFWI Annual meeting via Zoom (Business element)			
Tuesday 15 March	Garden Design workshop – WI Office 9.30am – 3pm	£30	ACTGD	28 Feb
Thursday 21 April	National Holocaust Centre and Museum visit by coach	£40	PA&E HC	7 Mar
Thursday 28 April	Quiz with Afternoon tea - Ropsley	£7.50	APR22QUIZ	17 Mar
Tuesday 10 May	Embroidery workshop – WI Office 9.30am – 3pm	£35	ACTE	25 Apr
Tuesday 24 May	Ladies Lunch with Baroness Hogg at Belton Park Golf Club	TBC		

April 2022 Newsletter

Please send any contributions for the next newsletter
by **14 March 2022**

to: fedoffice@lsfwi.org.uk